

Quick Installation Guide

Indoor/Outdoor Wireless Flex Bridge

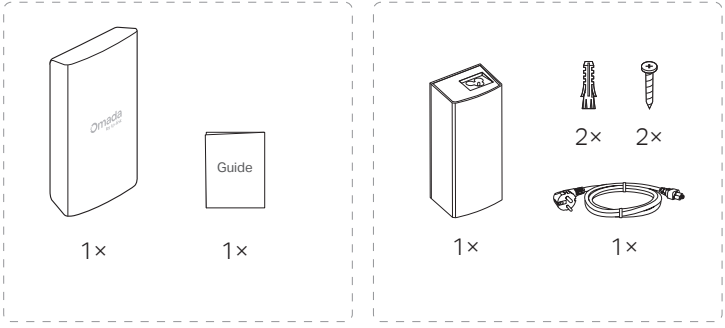


Scan for  
Bridge AP Start Guide

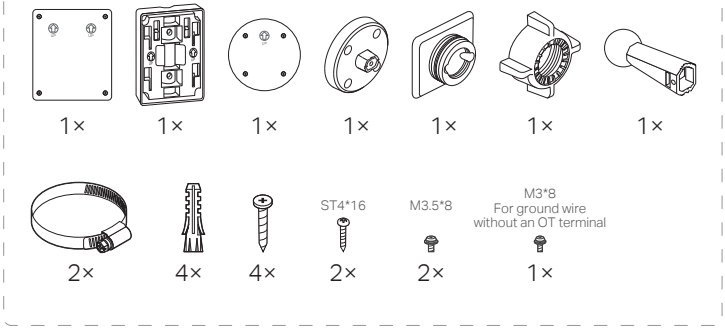
Note: Flex Bridge 5 is used for demonstration. Images may differ from your actual product.

© 2025 TP-Link 7100002629 REV1.0.1

Package Contents



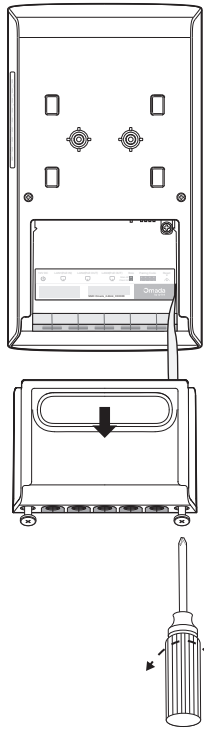
Mounting Kit



Note: Accessories may vary by region and model.

Open the Cover

Loosen the attached screws and slide open the cover.

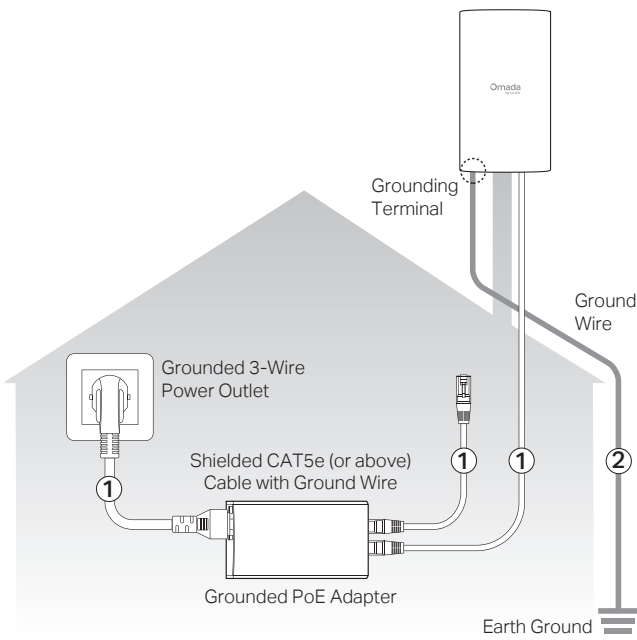


Grounding

Choose a grounding method according to site requirements:

Method ①: PoE Adapter + Shielded CAT5e (or above) Cable with Ground Wire + Grounded 3-Wire Power Outlet

Method ②: Grounding Terminal + Ground Wire

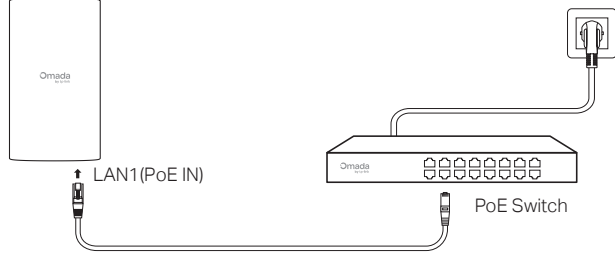


Power On

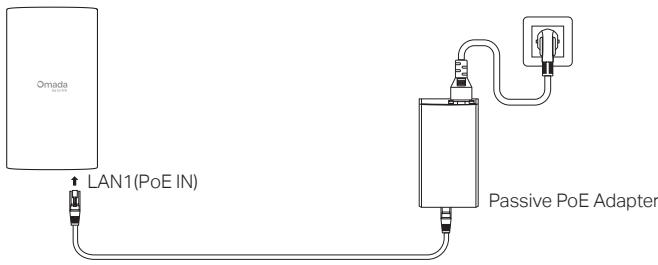
Option 1: Via Power Adapter



Option 2: Via PoE Switch

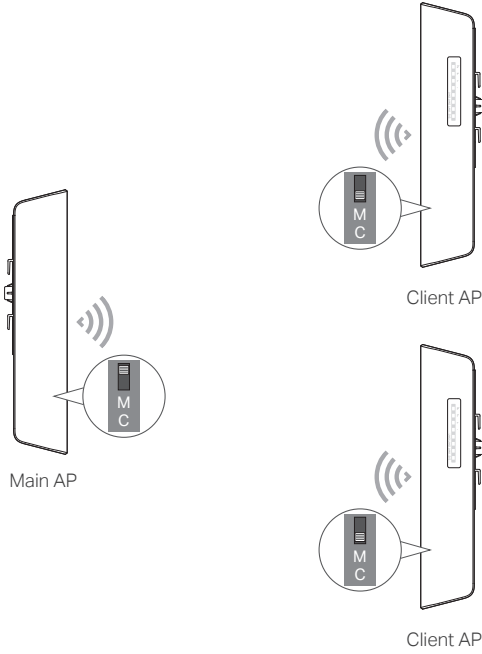


Option 3: Via Passive PoE Adapter

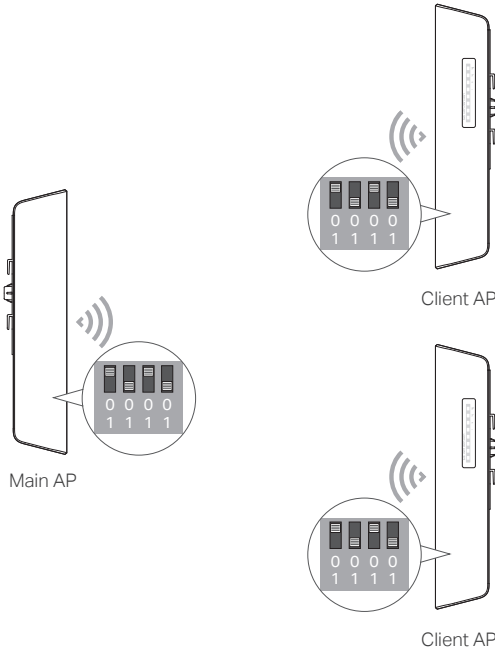


Pairing

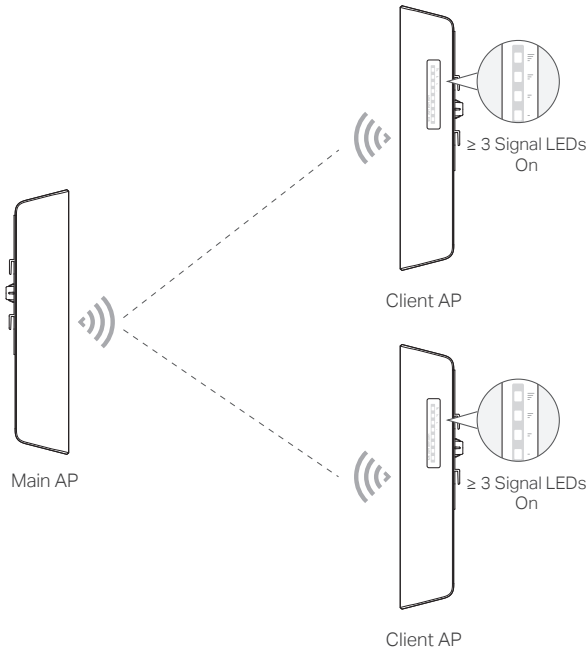
1 Toggle the Role switch to assign each AP's role. Each group contains one Main AP and one or several Client APs.



2 Toggle the Pairing Code switches to set each AP's pairing code. The APs in the same group use the same pairing code, and different groups use different pairing codes.



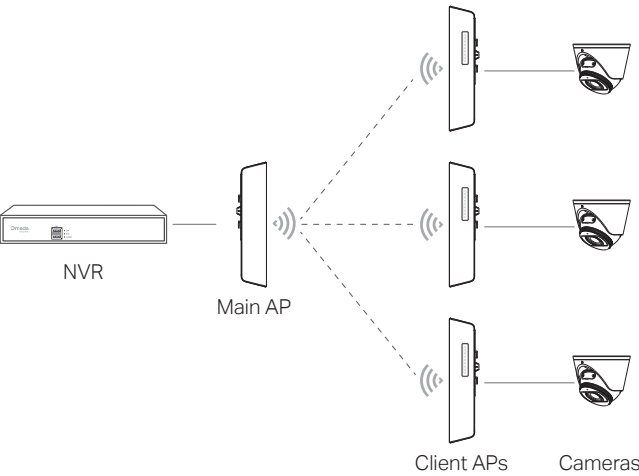
3 When a Client AP's Signal LEDs turn solid, it is networked successfully.



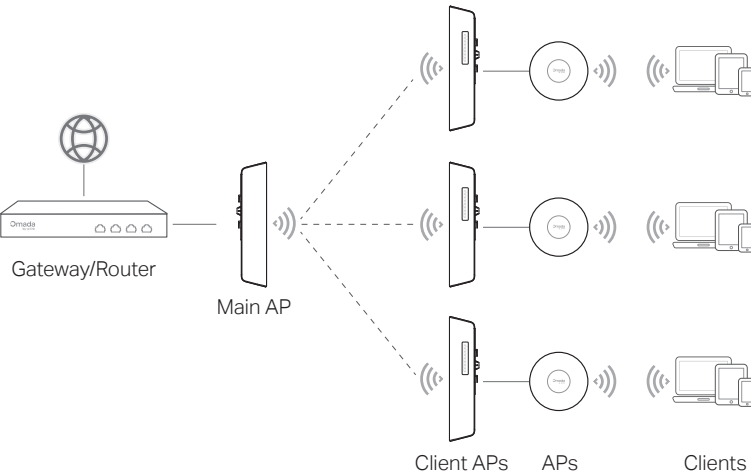
- Notes:
- Normally, the wireless bridge setup completes within 2 minutes. If the connection is not established within 10 minutes, please check the following:
    - Ensure that the Pairing Code switches on the Client AP are set to the same code as the Main AP.
    - Adjust the alignment and orientation of the Client AP to ensure it is properly aimed at the Main AP and receiving sufficient signal strength.
  - The Main AP's pairing window will time out 2 hours after the first Client AP connects to it. To start the pairing window again, refer to the user manual at <https://support.omadanetworks.com/document/>.

Typical Topology

Scenario 1: Remote Camera Monitoring



Scenario 2: Wi-Fi Extension

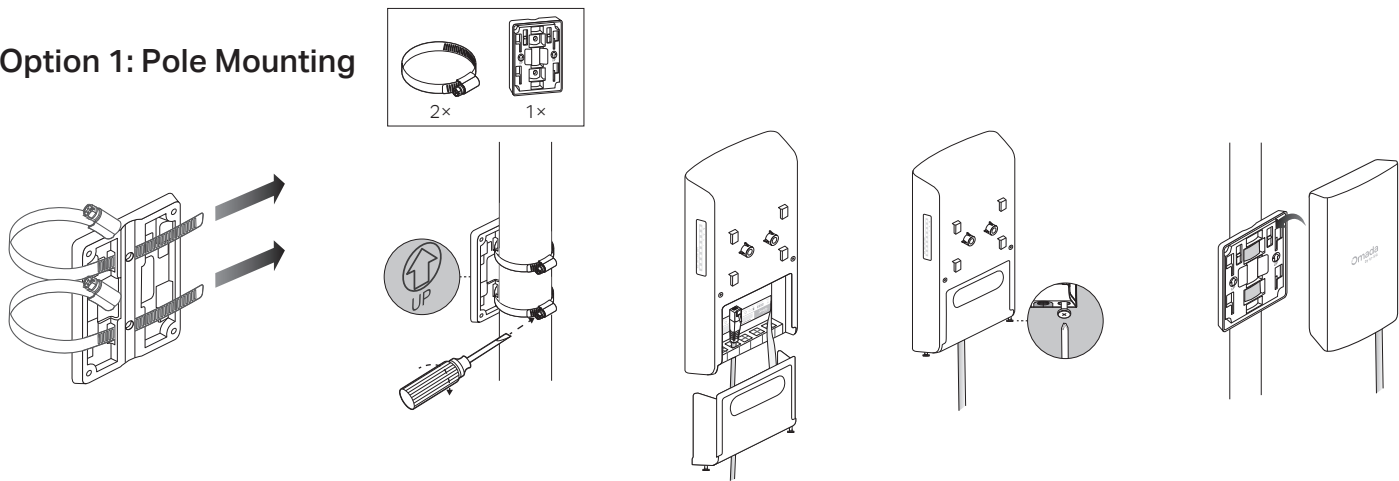


- The default SSID on the product is only for device access and management. If you need an SSID to access the internet and service networks, refer to the **Network Management** section to set up the AP.
- In a network without a DHCP Server, the Main AP will use the DHCP fallback IP address **192.168.0.254** and assign IP addresses to Client APs.

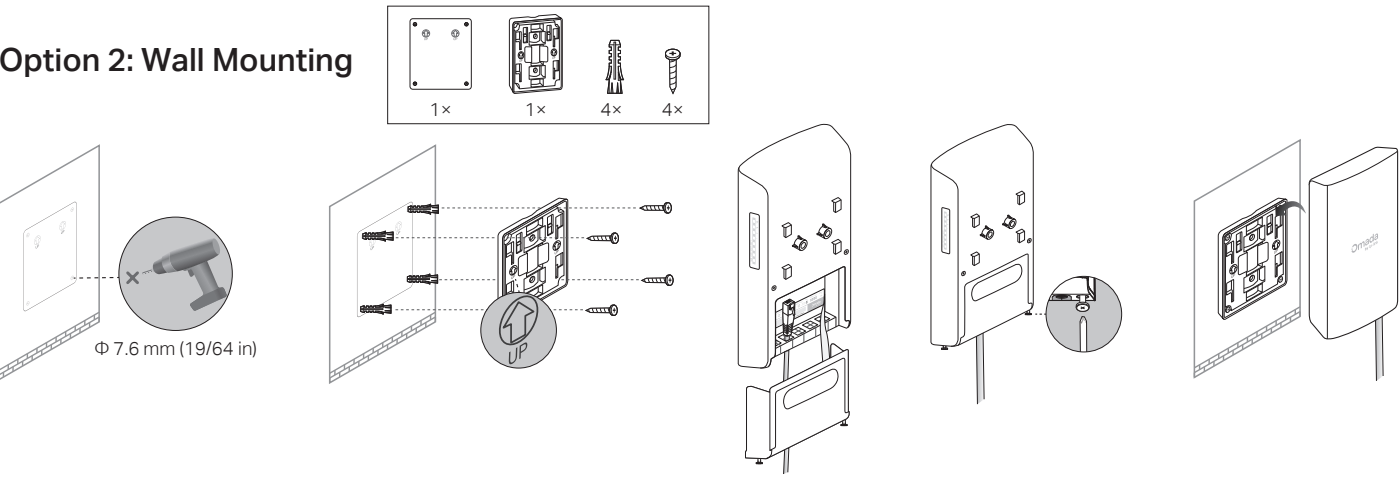
Mounting

Note: The product can only be installed by instructed person or skilled person.

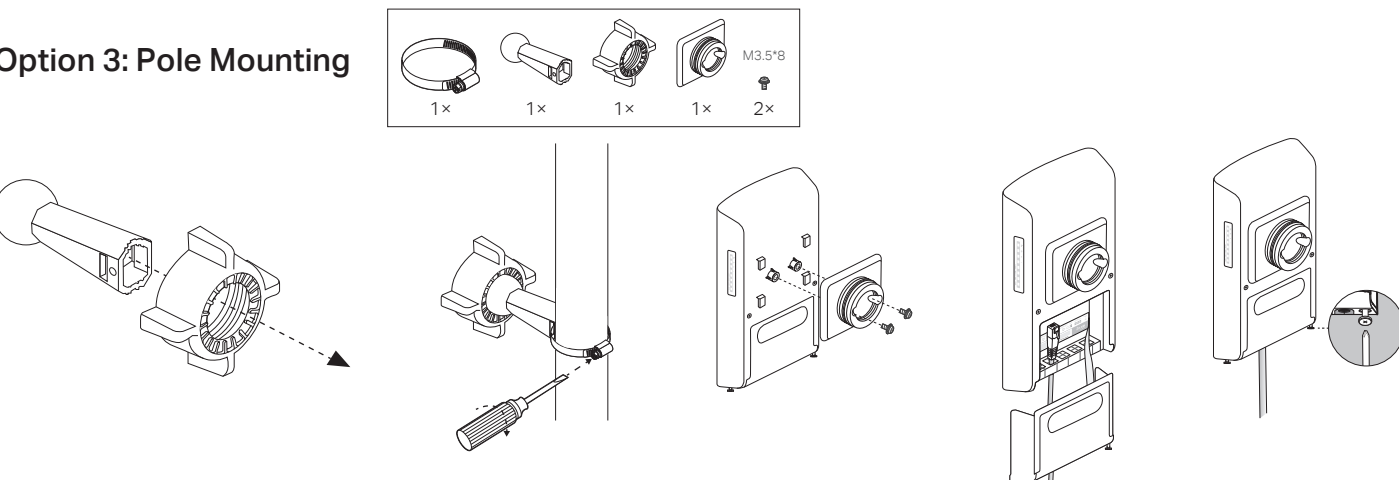
Option 1: Pole Mounting



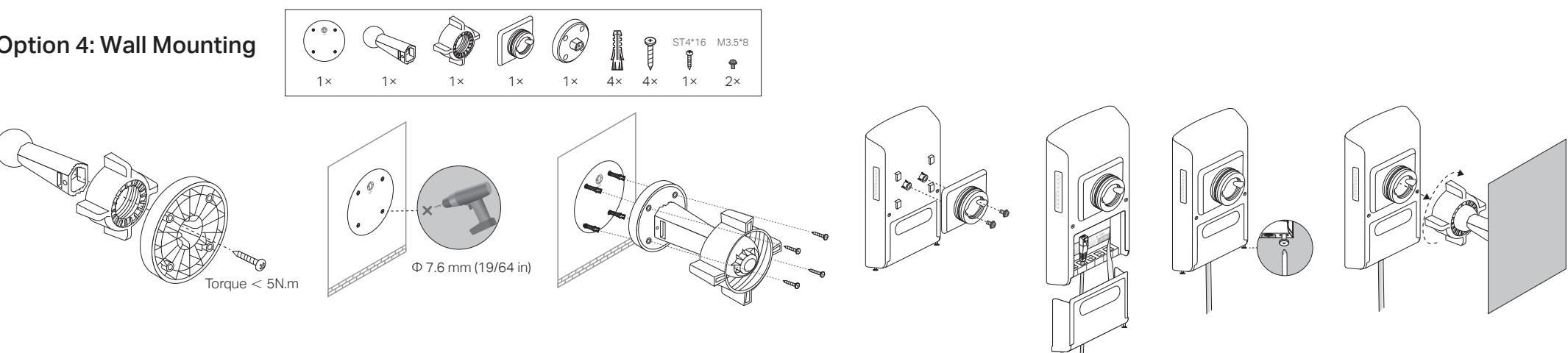
Option 2: Wall Mounting



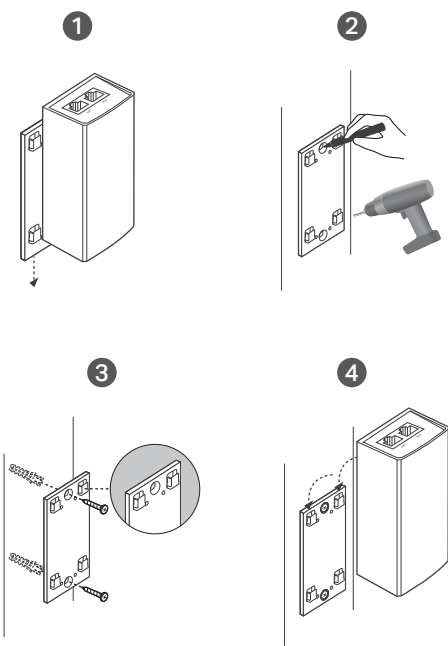
Option 3: Pole Mounting



Option 4: Wall Mounting



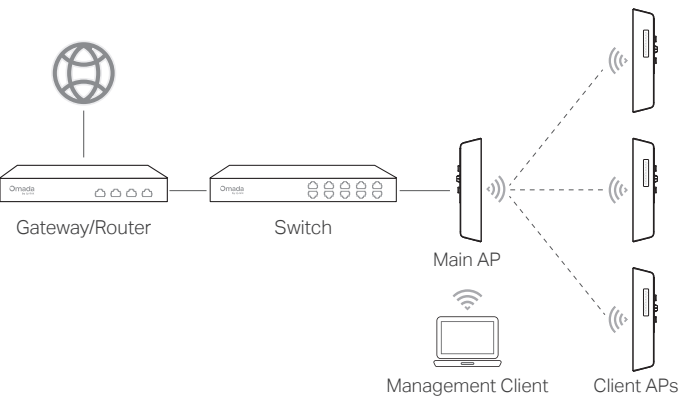
(Optional) Mount the Power Adapter



Network Management

Option 1: Standalone Mode

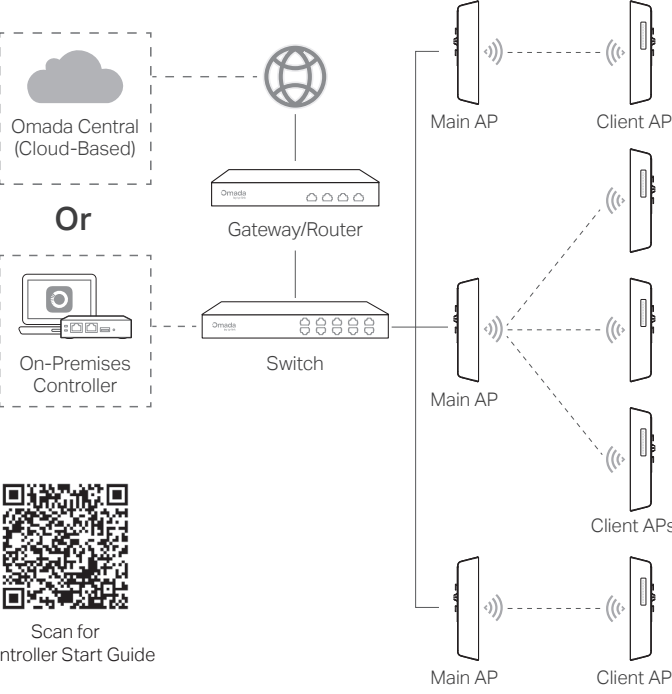
Configure and manage APs through the Main AP.



Scan for Standalone Start Guide

Option 2: Controller Mode

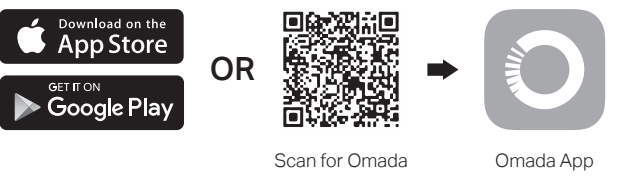
Configure and manage APs (and other Omada devices) centrally with an Omada Controller.



Scan for Controller Start Guide

Omada App

With the TP-Link Omada app, you can access and manage your Omada devices at a local site or remotely with a tap of your phone.



More Configurations

For more configurations, refer to the User Guides of the Omada Controller and Omada APs at: <https://support.omadanetworks.com/document/>



Safety Information

- Keep the device away from fire or hot environments. DO NOT immerse in water or any other liquid.
- Do not attempt to disassemble, repair, or modify the device. If you need service, please contact us.
- Do not use the device where wireless devices are not allowed.
- Do not use a damaged charger or USB cable to charge the device.
- Do not use any other chargers than those recommended.
- The adapter shall be installed near the equipment and shall be easily accessible.
- The adapter should be used indoors where the ambient temperature is lower than or equal to 40 °C.
- The socket-outlet shall be installed near the equipment and shall be easily accessible.
- Plug the adapter into a wall outlet with an earthing connection through the power supply cord.
- The PoE ports shall not be used to charge lithium batteries or devices supplied by lithium batteries.
- Use only power supplies which are provided by manufacturer and in the original packing of this product. If you have any questions, please don't hesitate to contact us.
- This equipment can be powered only by equipments that comply with Power Source Class 2 (PS2) or Limited Power Source (LPS) defined in the standard of IEC 62368-1.
- Use only power supplies listed in the user instructions. Refer to the User Manual on the product support page.

For AP Controller, go to the Devices page and select the desired AP to specify the channel.

For web browser, go to **Wireless > Wireless Settings** to specify the channel.

**Attention:** In EU member states, EFTA countries and Northern Ireland, the operation in the frequency range 5150MHz - 5350MHz is only permitted indoors.

**Attention:** In Great Britain, the operation in the frequency range 5150MHz - 5350MHz is only permitted indoors.

	AT	BE	BG	CH	CY	CZ	DE	DK
	EE	EL	ES	FI	FR	HR	HU	IE
	IS	IT	LI	LT	LU	LV	MT	NL
	NO	PL	PT	RO	SE	SI	SK	UK(NI)
	UK							

More Resources

Main Site	<a href="https://www.omadanetworks.com/">https://www.omadanetworks.com/</a>
Video Center	<a href="https://support.omadanetworks.com/video/">https://support.omadanetworks.com/video/</a>
Documents	<a href="https://support.omadanetworks.com/document/">https://support.omadanetworks.com/document/</a>
Product Support	<a href="https://support.omadanetworks.com/product/">https://support.omadanetworks.com/product/</a>
Technical Support	<a href="https://support.omadanetworks.com/contact-support/">https://support.omadanetworks.com/contact-support/</a>

Warranty

For details on the warranty period, policy, and procedures, visit <https://support.omadanetworks.com/warranty-services/>.

Support

For technical support, user guides, and other information, please visit <https://support.omadanetworks.com/>, or simply scan the QR code.



TP-Link hereby declares that the Bridge AP is in compliance with the essential requirements and other relevant provisions of directives 2014/53/EU, 2009/125/EC, 2011/65/EU and (EU)2015/863. The original EU Declaration of Conformity may be found at <https://www.tp-link.com/en/support/ce/>.

TP-Link hereby declares that the Bridge AP is in compliance with the essential requirements and other relevant provisions of the Radio Equipment Regulations 2017. The original UK Declaration of Conformity may be found at <https://www.tp-link.com/support/ukca/>